



# SPARTAN TOOL

FOR TOUGH CUSTOMERS. SINCE 1943.



## PRODUCT MANUAL

# Model 700

**Spartan Tool LLC** | 1618 Terminal Road | Niles, MI 49120  
order by phone **800.435.3866** order online **[SpartanTool.com](https://SpartanTool.com)**

© 2024 Spartan Tool LLC  
Part #027553010



# Contents

**WARNINGS ..... 3**

**TECHNICAL INFORMATION ..... 4**

**ASSEMBLY INSTRUCTIONS ..... 5**

    Operating Instructions.....6

**OPERATING INSTRUCTIONS ..... 6**

    Operating a Power-Driven Cleaning Tool .....7

    How to Repair Kinked or Broken ¼" and 5/16" Open Hook Cables.....7

    Care of Machine .....7

    How to Order Parts for Your Model 700 .....8

**MODEL 700 CABLE & PARTS ..... 8**

    Model 700 Cable.....8

    5/16" Multi-Purpose Inner-Core Cable .....8

**MODEL 700 FINAL ASSEMBLY..... 9**

**WARRANTY INFORMATION ..... 11**



# Warnings



- Read the safety and operating instructions before using any Spartan Tool product. Drain and sewer cleaning can be dangerous if proper procedures are not followed and appropriate safety gear is not utilized.
- Before starting unit, be sure to wear personal protective equipment such as safety goggles or face shield and protective clothing such as gloves, coveralls or raincoat, rubber boots with metatarsal guards, and hearing protection.
- Drains and sewer can carry bacteria and other infectious micro-organisms or materials which can cause death or severe illness. Avoid exposing eyes, nose, mouth, ears, hands, and cuts and abrasions to waste water or other potentially infectious materials during drain and sewer cleaning operations. To further help protect against exposure to infectious materials, wash hands, arms and other areas of the body, as needed, with hot, soapy water and, if necessary, flush mucous membranes with water. Also, disinfect potentially contaminated equipment by washing such surfaces with appropriate chemicals or soaps.
- For any questions, contact Spartan Tool at the address shown below.

## CONTACT US

Spartan Tool LLC  
1618 Terminal Road  
Niles, MI 49120  
800.435.3866  
SpartanTool.com

### CALIFORNIA PROP. 65

This product may contain an extremely small amount of lead in the coating. Lead is a material known to the State of California to cause cancer or reproductive toxicity.

## USE OF ANY ELECTRIC EQUIPMENT IN A WET OR DAMP ENVIRONMENT CAN CAUSE FATAL SHOCK IF NOT PROPERLY GUARDED AGAINST BY THE OPERATOR.

1. Before using your Spartan equipment, make sure that a properly grounded, 3-hole electrical outlet is available. If not, as in older homes, use a 3-prong adapter and connect the green pigtail or grounding lug to a known ground such as a cold water pipe.
2. Don't assume all 3-hole outlets are properly installed. Check the outlet and also the adapter, if used, with an outlet testing device which quickly indicates if a ground is connected. Correct a faulty test indication before proceeding.
3. Plug the three-wire cord furnished with your machine into the inspected outlet. If an extension cord must be used, it must be of an approved three-wire type in good condition, equipped with a three-prong plug. Never cut off the grounding prong for use in a two-hole outlet receptacle. By doing so, you have cut off your protection from shock.
4. Use rubber boots and rubber gloves inside your Spartan riveted gloves to further insulate yourself. Respect electricity: you may not get a second chance.
5. Read this manual carefully for further safety precautions and operating instructions.

Your Spartan equipment has been built with the utmost safety in mind and thoroughly inspected for electrical and mechanical defects. However, through abuse and misuse on the job, a breakdown in the electrical insulation could conceivably develop and if this happens, you need a ground circuit to protect you.



**SPECS**

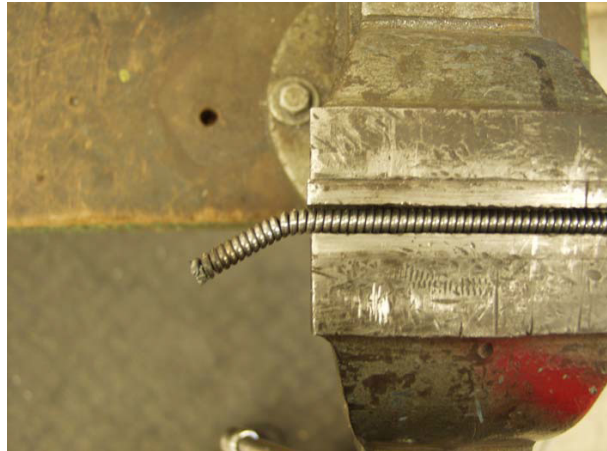
Pipe Sizes	1¼" to 2½" diameter
Weight	13 lbs.
Unit size	8.5" W x 17" D
Cable Capacity	¼" of 35'
Motor	115 volt
Motor	1.85 amp

# Assembly Instructions



1. Mount Model 700 in vise or have it held in secure position.
2. Lay entire length of cable on floor with non-working end of cable pointing toward chuck.
3. Temporarily remove the feed cap assembly from the power feed.
4. Put 15° bend in last half-inch of cable so it will take a circular position in drum (see Fig. 1).
5. Push cable into drum, using short bites, one foot at a time, to prevent kinking (see Fig. 2).
6. Feed entire length of cable into drum, leaving only the bulb or enlarged head exposed.
7. Re-install the feed cap assembly.
8. Untie power cord, making entire length available for use.

**Now you are ready to operate.**



**Fig. 1** Bend cable end



**Fig. 2** Feed entire cable into drum



# Operating Instructions

## OPERATING INSTRUCTIONS

1. Insert proper size of cable in machine, using ¼" cable for 1¼" lines: ⅝" cable for 1½" to 2" lines.



**WARNING** Do not use your ¼" cable in lines larger than 1¼" in diameter

2. Hold unit close—within 6" to 8" of pipe opening.
3. Pull out enough cable to enter waste line or approach cross bar.
4. Position Reverse Switch, causing cable and drum to rotate in a clockwise direction. Don't reverse motor or use Reverse Action Switch until machine comes to a dead stop.
5. Press Off-On Trigger Switch causing cable to rotate through cross bar or into pipe opening.
6. To tighten chuck, grip it with your hand while motor turns clockwise and chuck will close easily.
7. Take 6" to 8" bite on cable, and feed same into line by advancing machine toward cleanout slowly, giving cable time to round fitting or remove stoppage.
8. When motor slows up, indicating a load on same, pull back a bit and start moving your unit forwards and backwards. This reciprocating action keeps the cable rotating—keeps the cable from getting "hung up"—the sole cause of cable kinkage or breakage.
9. If cable gets "hung up," stop your machine and reverse the direction of same through Reverse Switch, pulling back as you do so to free working end of cable.



**WARNING** Do not use Reverse Switch until your motor unit comes to a dead stop!

10. When chuck approaches cleanout, stop your machine; open the chuck and pull out another short length of cable.
11. Tighten your chuck and advance your machine toward pipe opening.
12. Repeat this action as often as necessary to clean the line.
13. When the job is completed, feed all cable back into drum 6" to 8" at a time—DON'T take long bites

## OPERATING A POWER-DRIVEN CLEANING TOOL

1. Stay close to pipe opening, having no more than 6" to 8" of cable exposed between machine and cleanout—especially when rounding fittings or removing stoppage.
2. Move your machine backwards and forwards constantly when you get into stoppage, thereby preventing your cable from getting "hung up" causing unnecessary kinkage. Remember, a rotating sewer cable cannot kink or break. Kinkage of cable takes place only when the working end of the cable gets "hung up" and you keep on twisting the other end.
3. Don't attempt to go around fittings or remove stoppage until your drum reaches full speed. It is the rotation of the cable that enables it to either (a) round fittings, (b) remove stoppage—NOT push power.

## HOW TO REPAIR KINKED OR BROKEN $\frac{1}{4}$ " AND $\frac{5}{16}$ " OPEN HOOK CABLES

Repair bulbs for  $\frac{1}{4}$ " and  $\frac{5}{16}$ " cables are available. If you kink your cable, cut the cable off at the kinked portion. Grind the end to provide a leader thread. Now, thread your repair bulb on the regular cable, as you would a nut on a bolt, turning about three turns—which will fasten it to the cable securely.

## CARE OF MACHINE

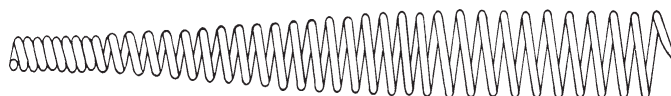
Dry or wipe your cables as you put them in the drum. When through with a job, place your machine back in the bucket. DON'T drop it—lay it down in its proper position in the bucket.



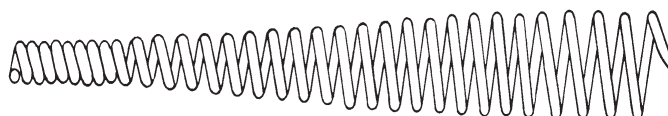
# Model 700 Cable & Parts

## MODEL 700 CABLE

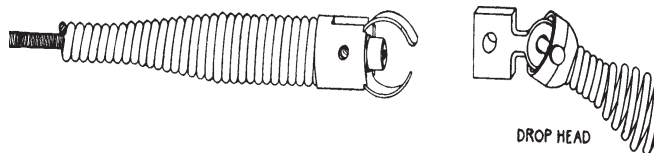
Model 700 Cables	
03449002	5/16" x 25' IC No. 8
03449003	5/16" x 30' IC No. 8
03449004	5/16" x 35' IC No. 8
04212402	5/16" x 25' OH
04212403	5/16" x 30' OH
04212404	5/16" x 35' OH
04224701	1/4" x 25' NCNT
04212102	1/4" x 25' OH
04212103	1/4" x 30' OH
04212104	1/4" x 35' OH
44104301	1/4" x 35' DH
44104302	1/4" x 35' DH



1/4" X 25' Sewer Cable with open hook end for rodding 1 1/4" waste lines only



5/16" X 25' Sewer Cable with open hook end for rodding 1 1/4" to 1 1/2" waste lines only



5/16" Multi-Purpose Inner-Core Cable

For rodding 1 1/4" to 1 1/2" lavatory, bathtub, shower stall wastes, etc. Each sewer rod comes equipped with all parts illustrated, including Allen head screws and wrenches for changing heads. Use cutters for removing grease and extraction hook for rags. Drop-head designed to assure downward direction on vents—imperative in rodding waste lines where fixtures are back-to-back.

## HOW TO ORDER PARTS FOR YOUR MODEL 700

Spartan Tool will supply all parts or accessories you require as quickly as possible. In order to do so, we must have information from you, including machine serial number and part numbers.

Please record the serial number of your machine in the space provided below:

### SPARTAN MODEL 700

Unit Serial Number

To order parts, look through the pictures until you find the part you require or an indication of where the part should be. Using the item number from the picture, go to that number on the adjacent page and check the description to determine if it is the part you desire.

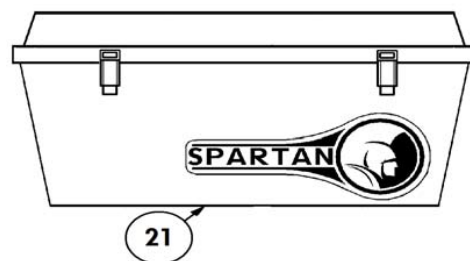
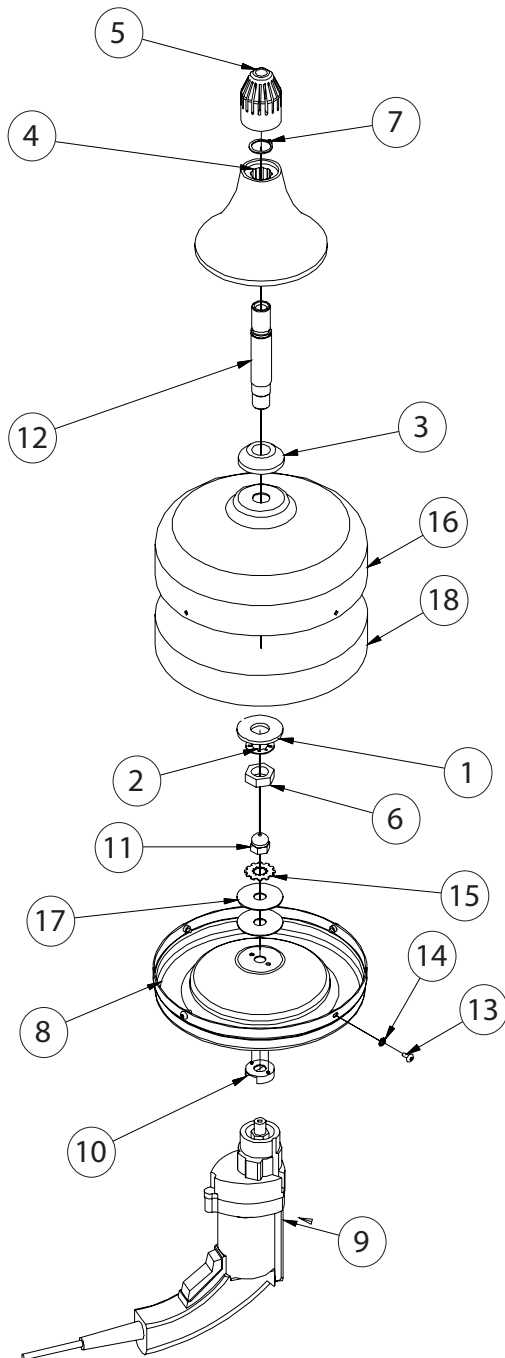
Using the part numbers, please contact your Spartan Territory Manager or Spartan Tool directly at [www.SpartanTool.com](http://www.SpartanTool.com).

### CONTACT US

Spartan Tool LLC  
1618 Terminal Road  
Niles, MI 49120  
800.435.3866  
[SpartanTool.com](http://SpartanTool.com)



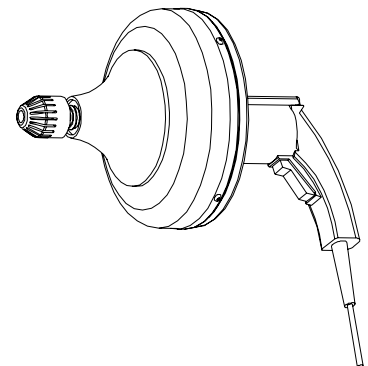
# Model 700 Final Assembly



# Model 700 Final Assembly

Item	Part Number	Description	Qty.
	02755310	Model 700 w/bucket	
1	00163300	Washer, Flat 3/8	1
2	02824700	Internal Tooth Lockwasher 3/4	1
3	02753400	Nozzle Collar-Model 700	1
4	02754400	Hand Guard Model 700	1
5	02773700	Chuck Assy C/W STL Collet	1
6	02820900	Nut, Hex Jam 3/4-16NF	1
7	02822700	Snap Ring-Large	1
8	44301300	Drum, Back Model 700	1
9	44301400	Motor Unit Milw 0299-20	1
10	44301500	Assy - Drum Adapter - Milw 0299-20	1
11	44301600	Nut, Acorn 1/2-20NF	1
12	44301800	Nozzle-Model 700	1
13	44301900	Screw, Truss HD #8-32 x 3/8	4
14	44301910	Washer-Ext Tooth #8	4
15	44302100	Int-Ext Tooth Lockwasher 1/2	1
16	44302300	Drum, Front 700 w/Pem Nuts	1
17	44302110	Washer, Fender 1/2"	2
18	44229300	Rubber Band (Not Shown)	1
21	44302600	Tool Box	1

Model 700 Cables	
44302000	Assembly: 700 Drive Unit (No Rubber Band or Toolbox)





For our terms and conditions, including warranty, please visit <https://spartantool.com/pages/terms-and-conditions>. For warranty assistance, please contact us at (800) 435-3866 or customerservice@spartantool.com.

## CONTACT US

Spartan Tool LLC  
1618 Terminal Road  
Niles, MI 49120  
800.435.3866  
SpartanTool.com

## Notes

This image shows a single sheet of white paper with horizontal ruling lines. The lines are evenly spaced and run across the width of the page. There are no margins, text, or other markings on the paper.



# SPARTAN TOOL

FOR TOUGH CUSTOMERS. SINCE 1943.

## CONTACT US

**Spartan Tool LLC**  
1618 Terminal Road  
Niles, MI 49120  
800.435.3866  
**SpartanTool.com**