



# SPARTAN TOOL

FOR TOUGH CUSTOMERS. SINCE 1943.



## SERVICE MANUAL

# Traveler 4.0

Spartan Tool LLC | 1618 Terminal Road | Niles, MI 49120  
order by phone **800.435.3866** order online **SpartanTool.com**

© 2024 Spartan Tool LLC  
Part #**64620000**  
Part #**64620001**  
Part #**64620002**



# Contents

<b>TECHNICAL INFORMATION</b> .....	<b>3</b>
Specs .....	3
Optional Items.....	3
Features.....	3
<b>FINAL ASSEMBLY</b> .....	<b>4</b>
Final Assembly .....	4
Final Assembly With Ipad - 64620000.....	4
Final Assembly With Galaxy - 64620001.....	4
Final Assembly Tablet Ready - 64620002.....	4
Assembly, Base Traveler (64060017) .....	8
Drum Assembly (64066642).....	13
Hinge Door Assembly (64050018) .....	17
Control Panel Assembly (64060033) .....	19
<b>WARRANTY INFORMATION</b> .....	<b>20</b>



## SPECS

<b>Pipe Sizes</b>	4" to 12" diameter
<b>Resolution</b>	976 x 496
<b>Push Rod</b>	200' of super strong yet slim profile push rod with space-efficient inner core design; optional Trap-Eze® 3.0 mini-camera available in 130' length for the smallest lines
<b>Weight</b>	46 lbs complete with Apple® iPad or Samsung Galaxy Tab®
<b>Size</b>	22.5" W x 26" H x 12" D
<b>Monitor</b>	Apple® iPad (9.7") or Samsung Galaxy Tab® (9.7")
<b>Camera Head</b>	40mm diameter self-leveling color camera head with high-intensity LEDs

## FEATURES

- Stronger yet thinner profile push rod with a removable, replaceable reel for quick changes in the field
- Touchscreen control of all features
- Telestrator technology allows you to highlight any problem with the touch of a finger
- On-screen, full QWERTY keyboard
- Included camera head delivers higher quality video with 500,000 pixels and high-intensity 84,830 lux LEDs for improved visibility
- Sapphire glass lens reduces scratching
- Waterproof, self-leveling camera head
- 512 Hz locating beacon
- Robust waterproof connectors
- More stable Wi-Fi connectivity
- 110 volt or battery operation
- Up to six hours of battery life on a single charge
- Freeze-frame snapshot capability at any time
- Add text at any time to any video or snapshot
- Changeable font sizes, colors and locations
- Easily removeable Apple® iPad or Samsung Galaxy Tab® communicates via Wi-Fi router connection, allowing you to move anywhere on the job site
- Full tablet capabilities allow you to email a recorded video at any time
- Camera centering guide included
- Camera light intensity rheostat
- Lithium-ion battery technology
- Built-in transport cart with extending handle and high-clearance wheels
- Heavy-duty rotationally molded case protects unit in harshest conditions
- Improved rubber wheels are stronger and more durable with bearings for smoother, quieter movement

## OPTIONAL ITEMS

- Trap Eze ® 3.0 mini-camera available in 130' length for the smallest lines
- Locator with four frequencies: 512 Hz (beacon), 32.8 kHz (beacon), 65.5 kHz, 60 Hz



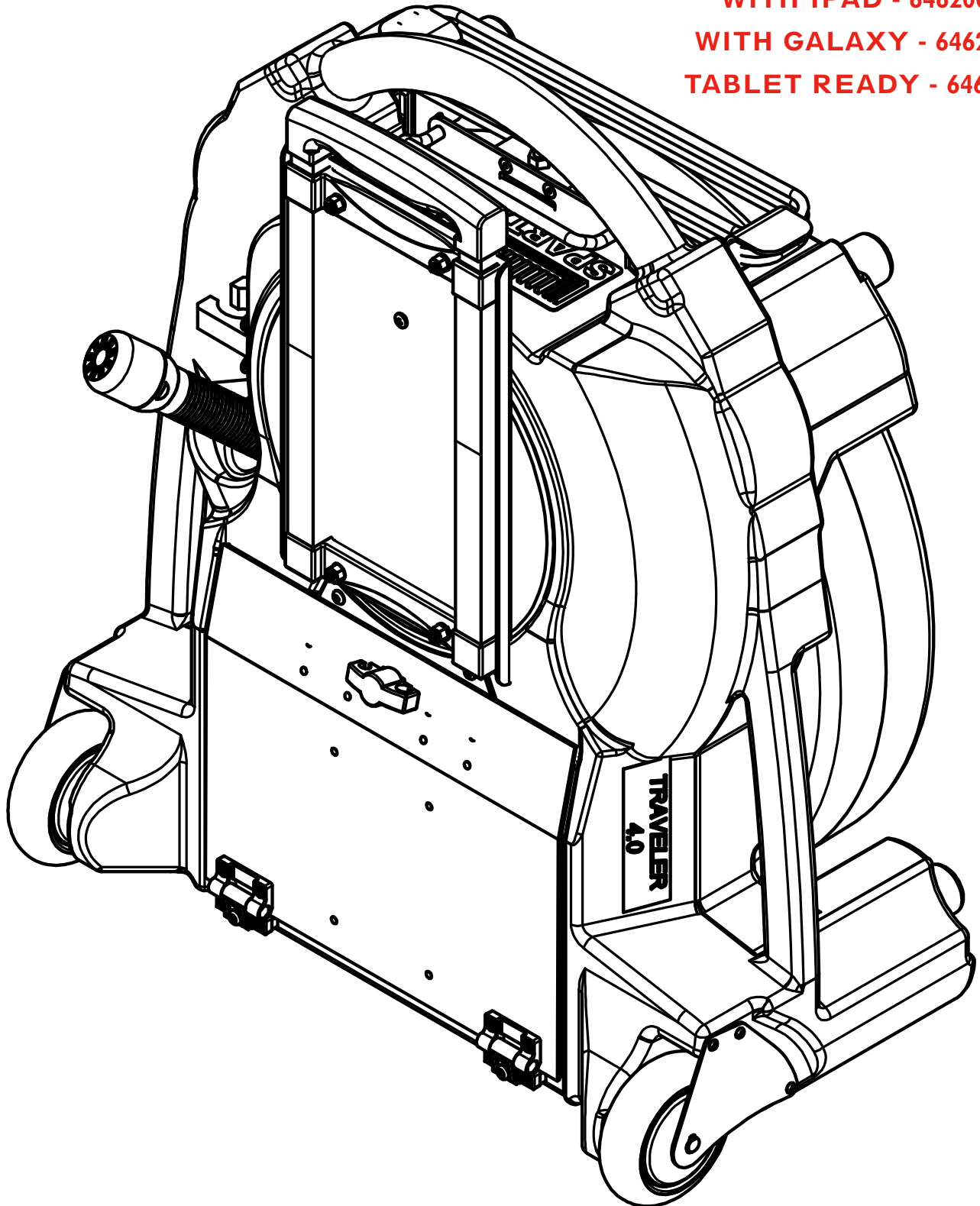
# Final Assembly

## FINAL ASSEMBLY

WITH IPAD - 64620000

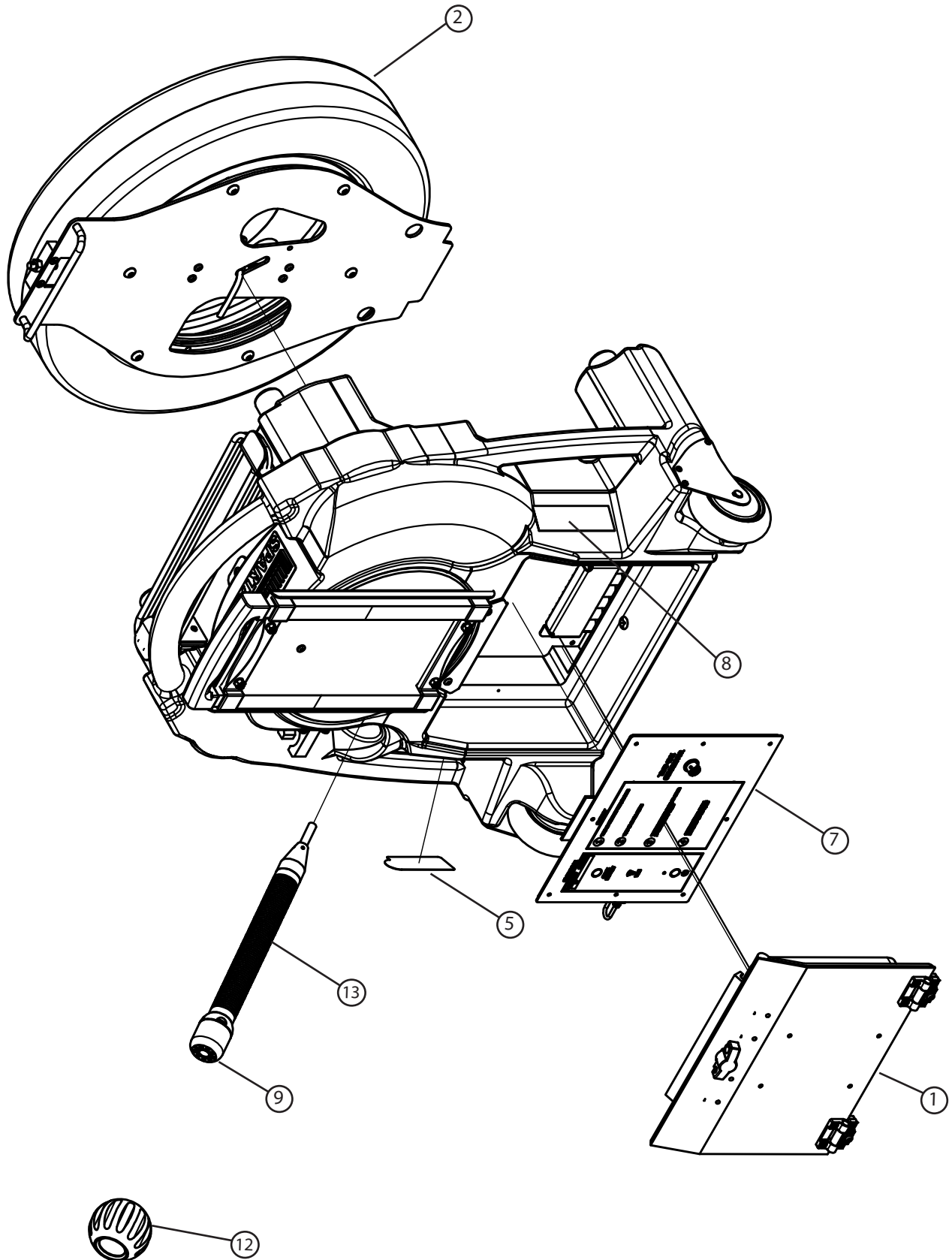
WITH GALAXY - 64620001

TABLET READY - 64620002



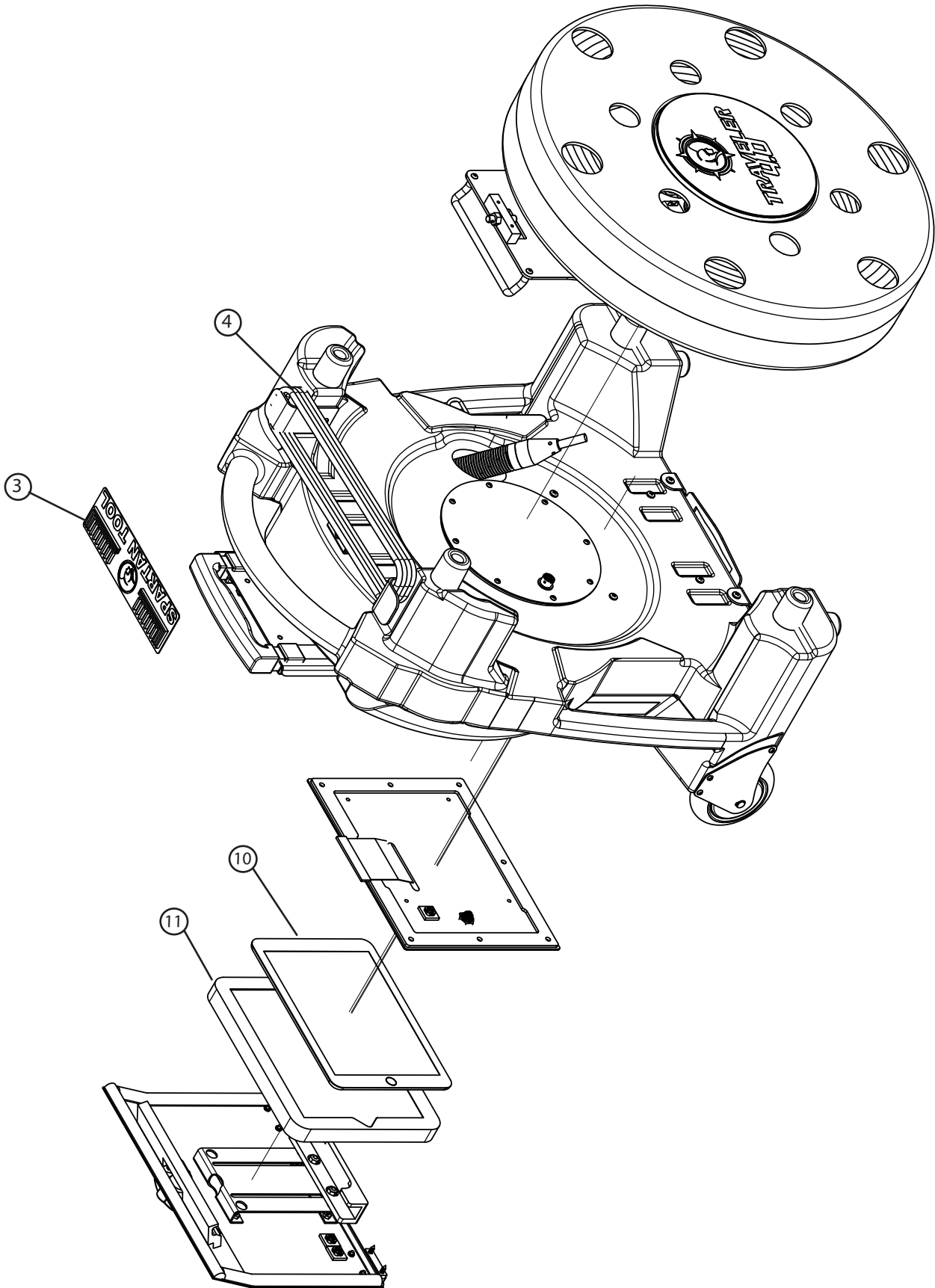
See Key on pg. 7

# Traveler 4.0 Final Assembly



See Key on pg. 7

# Traveler 4.0 Final Assembly



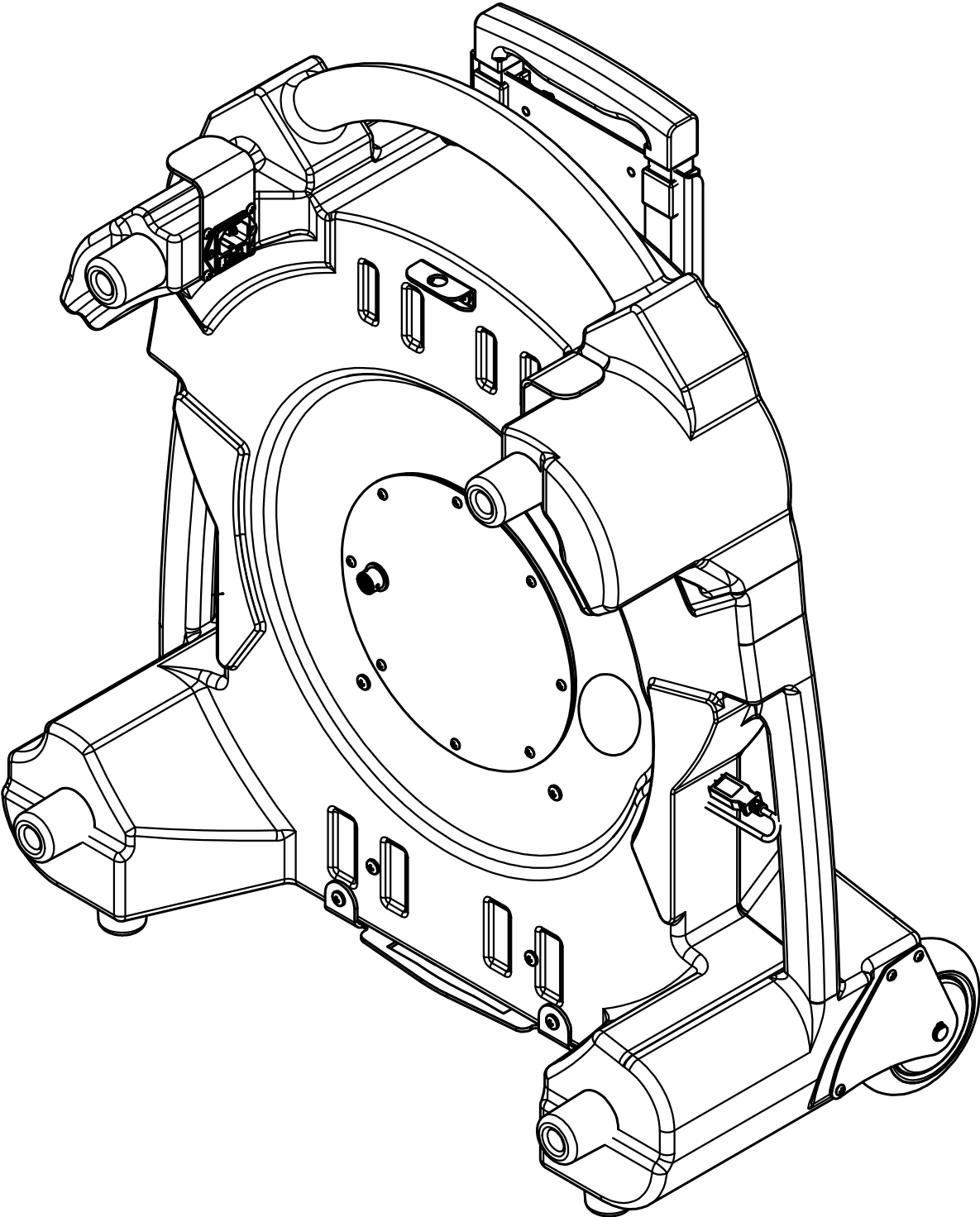
See Key on pg. 7

## **Key for Drawings on pg. 4-6**

Item	Part Number	Description	Qty.
1	64050018	Lid Assembly	1
2	64066642	Drum Assembly	1
3	64060023	Top Decal, TVR3	1
4	64020010	AC Power Cord, 118" – 10A, 125 v - Red	1
5	64050023	Decal, Side Plate – Serial	1
7	64060033	Control Panel	1
8	64060039	Decal	1
9	64066614	Camera Head, 40mm, TVR3	1
10	64020810	Tough case, iPad Gen 9	1
11	64020800	iPad, 32GB Gen 9	1
12	64066607	Centering Guide	1
13	64066612	Flexlink w/ Sonde, TVR3	1

# Assembly, Base Traveler

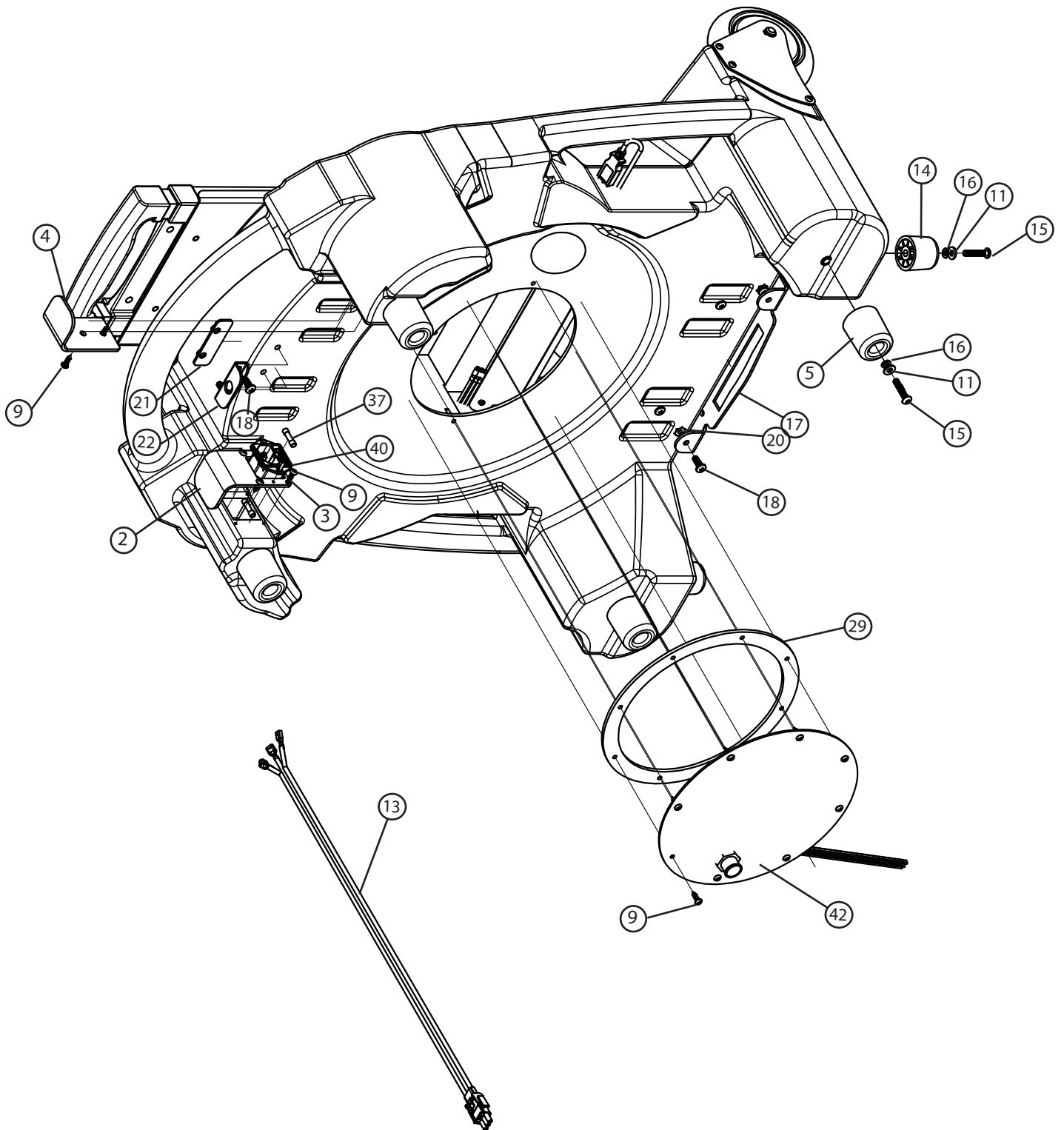
## ASSEMBLY, BASE TRAVELER (64060017)



See Key on pg. 12-13

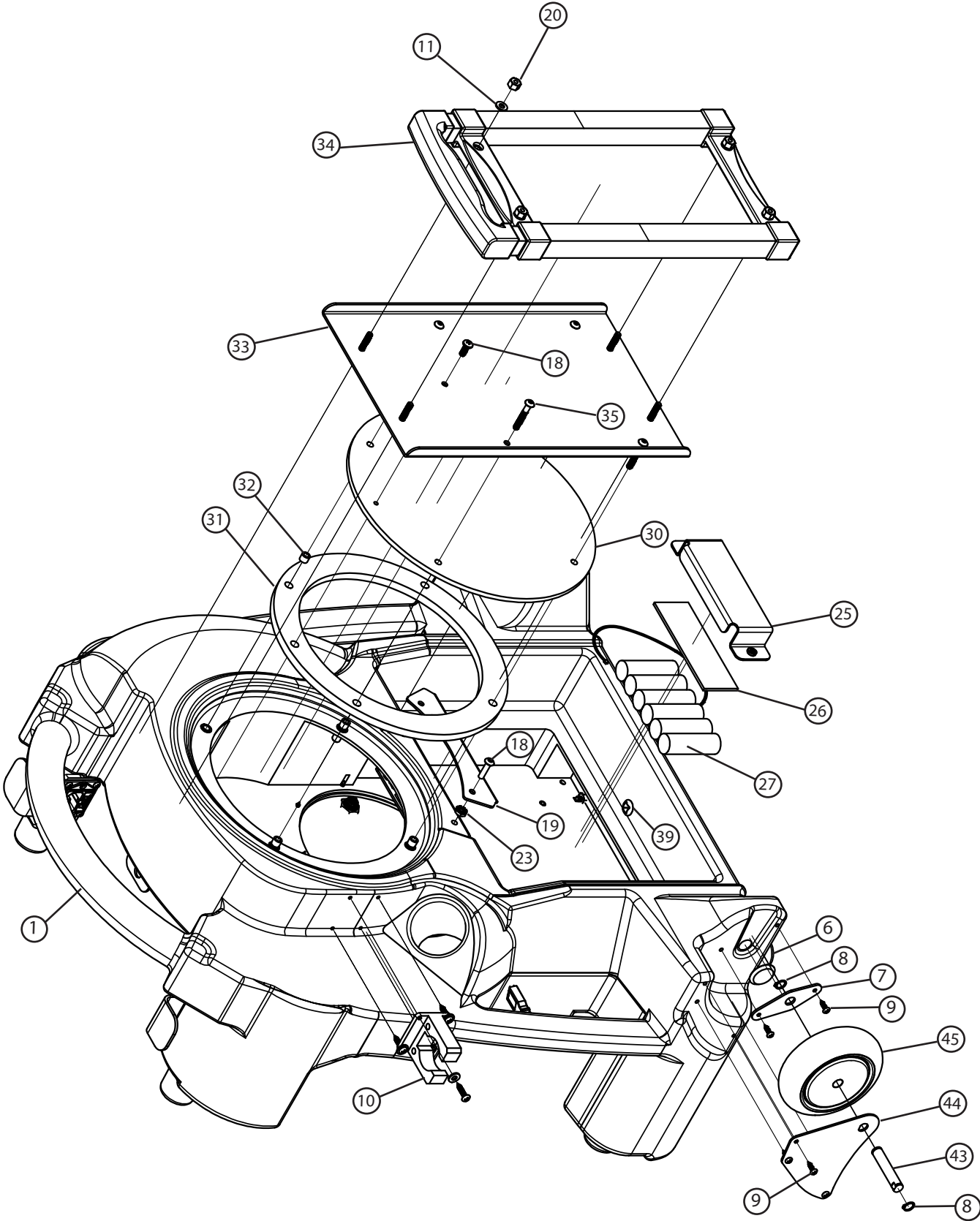


# Assembly, Base Traveler



See Key on pg. 12-13

# Assembly, Base Traveler



See Key on pg. 12-13

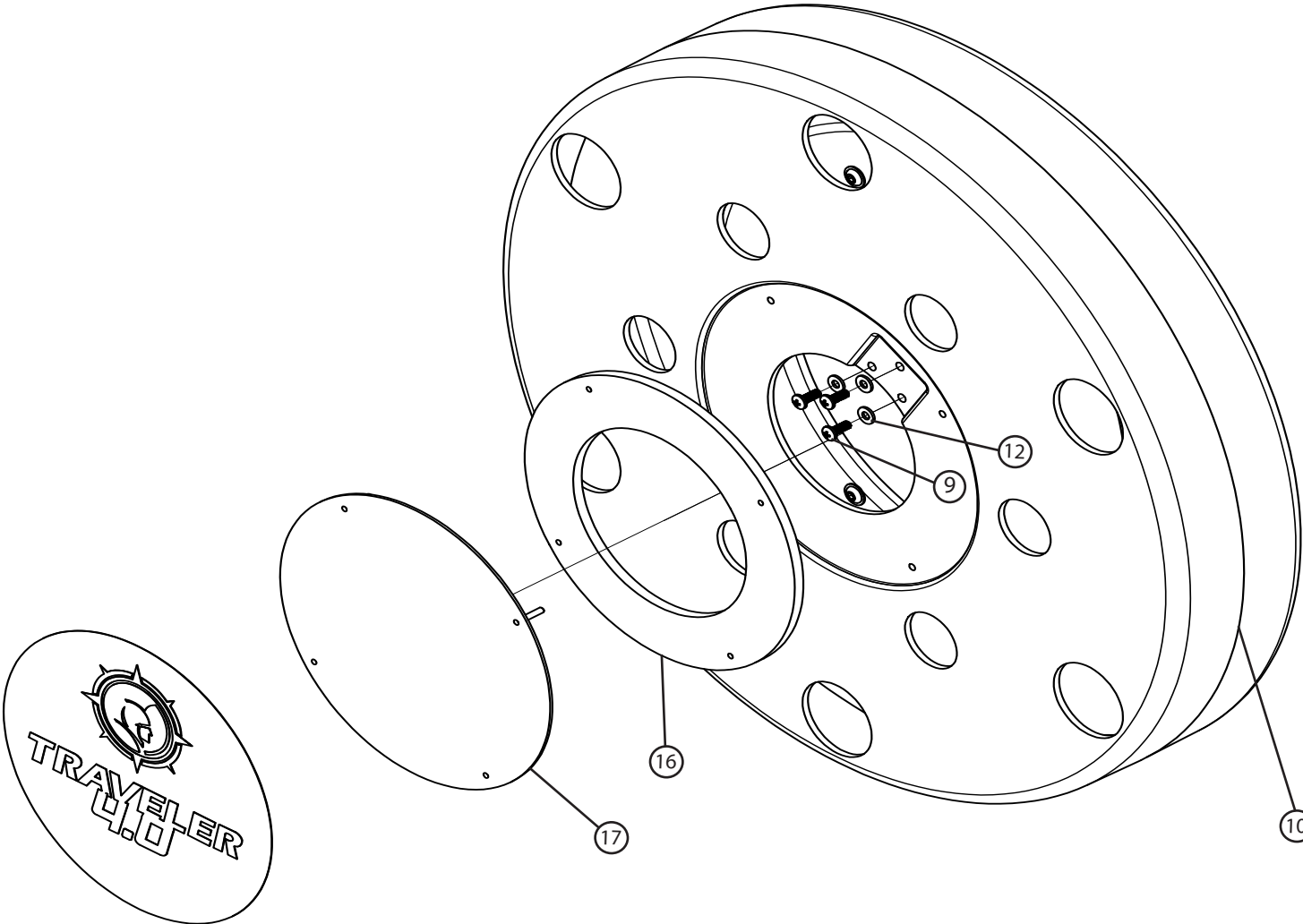
## Key for Drawings on pg. 8-11

Item	Part Number	Description	Qty.
1	64050056	Base, Machined-Phase 3 Traveler	1
2	64050000	Bracket, AC Receptacle	1
3	64050077	Connector, Power Entry	1
4	64050004	Bracket, AC Power Cord	1
5	64050005	Foot, Round HGT 1.50	4
6	64022620	Plug, 1/2" Dia - Black	1
7	64022410	Plate, Interior Wheel Mount	2
8	64022430	Snap Ring, External – 3/8" Shaft – SS	4
9	64050028	#6 X 1/2" Sheet Metal Screw	24
10	64026100	Rubber Clamp	1
11	64050014	Washer, #10 S'STL / Black	16
12	64050029	Screw #8 X 3/4 Black	4
13	64050045	Cable, AC Harness Assembly	1
14	64050012	Foot, Round HGT 1.125	4
15	64050021	Screw #10x32x1 Button Head	8
16	64021080	Lock Washer, #10 Aluminum	8
17	64050066	Bracket, Drum Plate Mounting	1
18	64050020	#10-32 1/2" Button Head Screw BLK SS	9
19	64050007	Plate, Pawl Latch	1
20	64027400	Nut, Nylon Lock – 10-32 – BLK Alum	8
21	64050067	Plate, Backup Lock Latch	1
22	64050068	Plate, Lock Latch	1
23	03850100	Nut, Hex KEP 10-32	2
25	64050042	Bracket, Mounting Battery 6 Cell	1
26	64050054	Rubber Insulator	1
27	64050035	Battery ASM 6 Cell Traveler	1
29	64050061	Gasket, Base Cover Phase – 3	1
30	64050073	Plate, Circle Handle MTG.	1
31	64050010	Gasket, Circle Cover Sparvision	1
32	64050031	Spacer, Unthreaded #10	4

## Assembly, Base Traveler

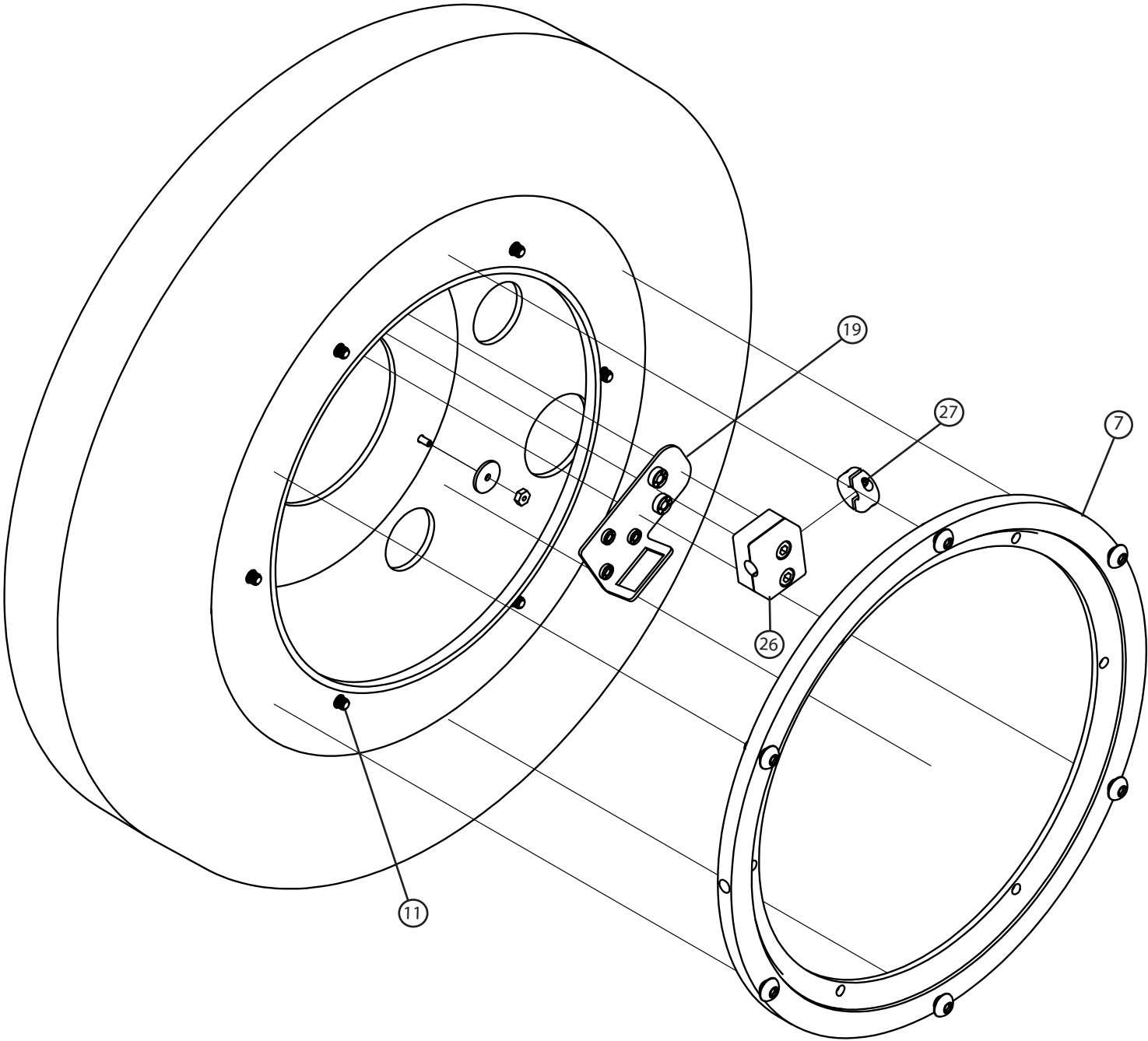
Item	Part Number	Description	Qty.
33	64050008	Plate, Handle Support Assembly	1
34	64050011	Telescoping Handle, Modified	1
35	64050025	Screw 10 x 32 x 1.5	4
37	64050078	Fuse, Cartridge	2
39	62021900	Bushing, Strain Relief	1
40	64023700	Screw, SHT Metal - #4 X ½" Blck	2
42	64066632	Assy, Base Cover & Cable	1
43	64066603	Axle, Wheel, TVR3	2
44	64066602	Plate, Exterior Wheel Mount, TVR3	2
45	64066604	Wheel, TVR3	2

**DRUM ASSEMBLY (64066642)**



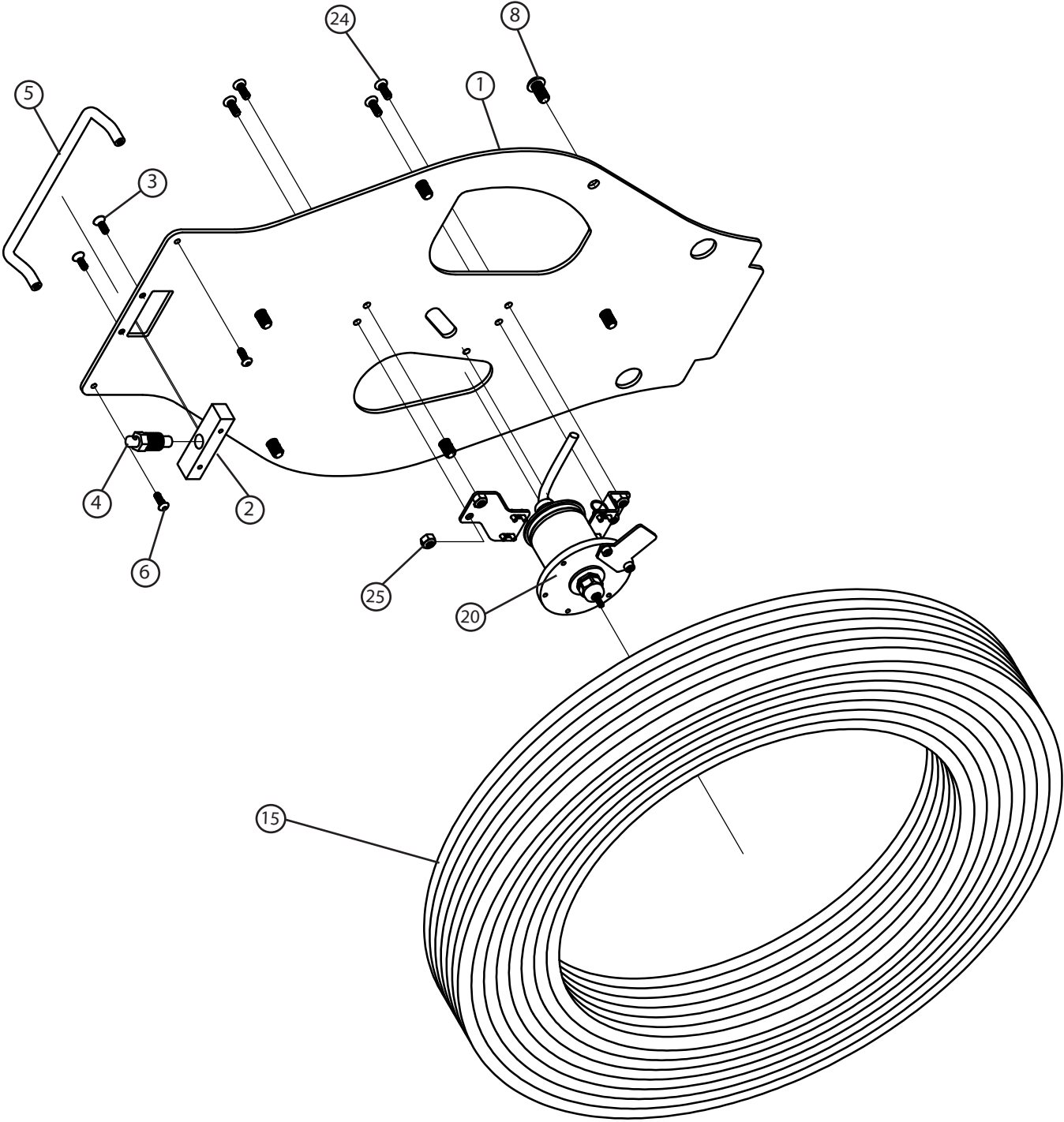
See Key on pg. 17

# Drum Assembly



See Key on pg. 17

# Drum Assembly



See Key on pg. 17

# Drum Assembly

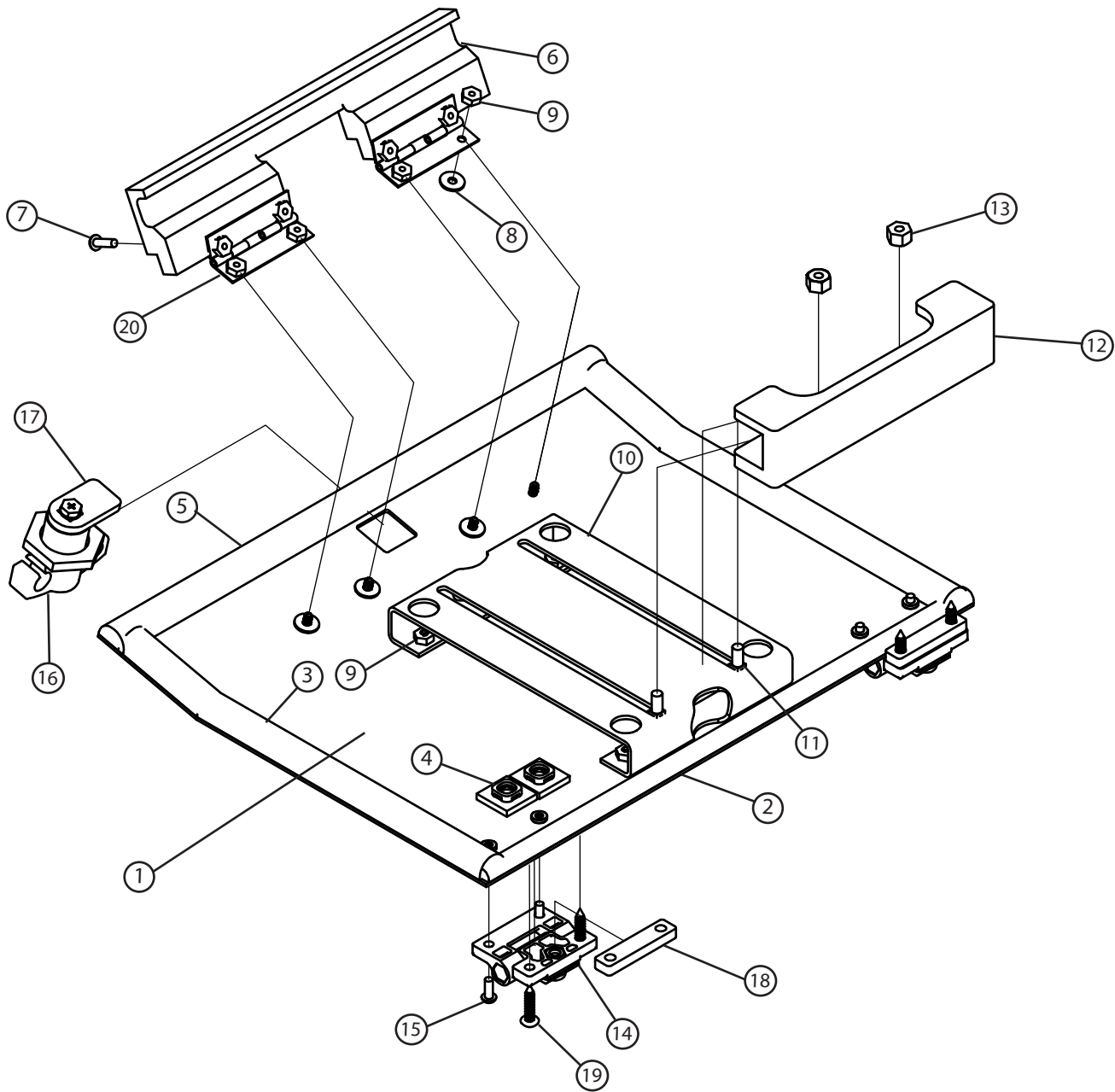
## Key for Drawings on pg. 14-16

Item	Part Number	Description	Qty.
1	64060006	Plate, Drum Mounting TVR3	1
2	64050060	Block, Locking Pin	1
3	64050084	Screw, 8-32 X 1/2 FH	2
4	64050075	Pin, Plunger Lock	1
5	64050074	Handle, Carry Drum	1
6	64050083	Screw, 8-32 x 1/2 BHCS	2
7	64021300	Bearing, Large Diameter Turntable	1
8	64050089	Screw, 5/16" x 5/8"	6
9	64050020	#10-32 1/2" Button Head Screw Black SS	3
10	64050050	Drum, Traveler	1
11	64050091	1/4-20-3/8 Flange Button Head Screw	6
12	64050014	Washer, #10 S'STL/Black	3
13	64050090	Washer, Drum Cover	4
14	64022780	Locknut, 6-32 Nylon Insert	4
15	64060019	Push Rod, 200'	1
16	64066623	Spacer, Drum Cover	1
17	64066624	Plate, Drum Cover	1
18	64060035	Drum Cover Decal	1
19	64060003	Bracket, Pushrod MTG, TVR3	1
20	64066601	Slipring & Encoder, TVR3	1
24	64066628	Encoder MTG Screw	4
25	64066627	Encoder MTG Nut	4
26	64060020	Pushrod Clamp	1
27	64066625	Pushrod Collar	1



# Hinge Door Assembly

## HINGE DOOR ASSEMBLY (64050018)



See Key on pg. 19

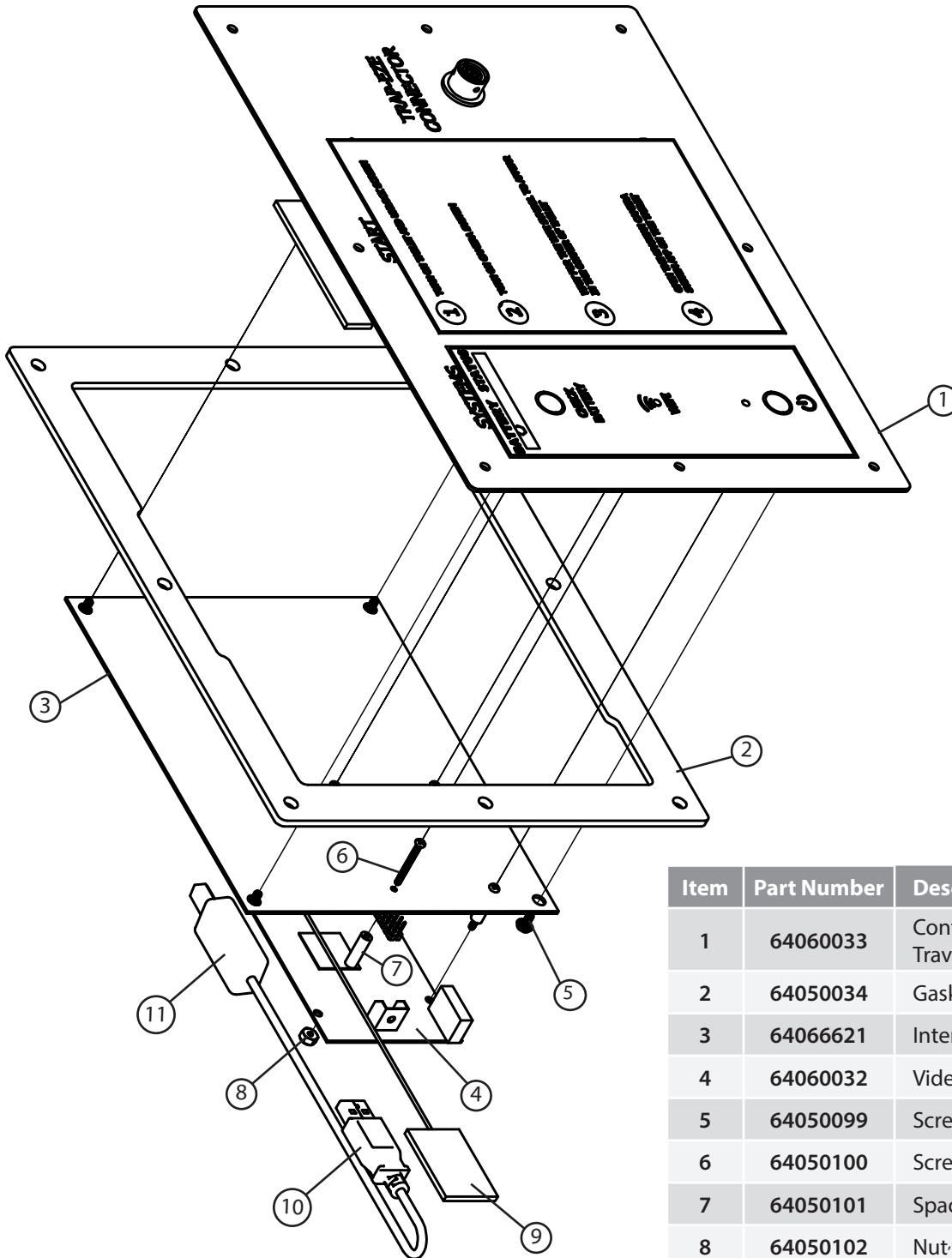
# Hinge Door Assembly

## Key for Drawing on pg. 18

Item	Part Number	Description	Qty.
1	64050006	Plate, Cover – Door Traveler	1
2	63031010	Rubber Seal $\frac{3}{8}$ x $\frac{7}{32}$ Black	1
3	64050019	Foam Rubber Seal	2
4	64024210	Zip Tie, Mounting Base	2
5	64050019	Foam Rubber Seal $\frac{5}{8}$ x $\frac{3}{8}$	1
6	64050112	Grab, Upper Pivot – iPad	1
7	64022770	Screw, 6-32 x $\frac{1}{2}$ - BLK SS	4
8	64022915	Washer, Plastic #6 Black	4
9	64022780	Locknut, 6-32 Nylon Insert	12
10	64027100	Plate, Universal Tablet Mount	1
11	64027300	Screw, SQR Neck Bolt 10-32 X $\frac{5}{8}$	2
12	64027200	Grab, Lower Tablet Mount	1
13	64027400	Nut, Nylon Lock – 10 - 32 – Black Alum	2
14	64022980	Hinge, Friction Adjustable 1- $\frac{1}{16}$ " Leaf	2
15	64022925	Screw, 6-32 x $\frac{3}{8}$ " BT HD BLCK	4
16	64050002	Knob Cam Lock, Traveler	1
17	64050001	Pawl, Door CAM Lock	1
18	64022990	Shim, Adjustable Hinge Large	2
19	64050029	Screw #8 x $\frac{3}{4}$ Black	4
20	64022970	Hinge, Torsion – Surf Mount 2" Leaf	2

# Control Panel Assembly

## CONTROL PANEL ASSEMBLY (64060018)



Item	Part Number	Description	Qty.
1	64060033	Control Panel Assembly, Traveler 2023	1
2	64050034	Gasket, Control Panel	1
3	64066621	Interface Board, Tvr3	1
4	64060032	Video Processing Card, T&TI	1
5	64050099	Screw, 4-40 1/4" Phil. Pan Hd	4
6	64050100	Screw, 2-56 X 7/8" Phil. Pn Hold	3
7	64050101	Spacer, Nylon 5/8" Long	3
8	64050102	Nut, 2-56 Nylok	3
9	64060034	Wi-Fi Antenna, Traveler 2023	1
10	64060036	Cable, USB A to USB B, 100 mm	1
11	64060037	Cable, Rca, 200 mm	1
12	64024210	Mounting Base, Zip Tie	1



# Warranty Information

For our terms and conditions, including warranty, please visit <https://spartantool.com/pages/terms-and-conditions>. For warranty assistance, please contact us at (800) 435-3866 or [customerservice@spartantool.com](mailto:customerservice@spartantool.com).

## CONTACT US

Spartan Tool LLC  
1618 Terminal Road  
Niles, MI 49120  
800.435.3866  
SpartanTool.com



# SPARTAN TOOL

FOR TOUGH CUSTOMERS. SINCE 1943.

## CONTACT US

**Spartan Tool LLC**  
1618 Terminal Road  
Niles, MI 49120  
800.435.3866  
**SpartanTool.com**

6462000  
6462001  
6462002